

Milvus *milvus*

# Milvus *milvus*

Milvus is named after *Milvus milvus*, Latin for Red Kite – *an unmistakable magnificent bird of prey, with its reddish-brown body, angled wings and deeply forked tail* – spotted gracefully flying over the typography department on June 13th 2008.

*Milvus* is a text typeface specifically designed for periodicals and books. Inspired by old style faces, *Milvus* is a contemporary design, altering formal principles by paying attention to small details that provide it with individual qualities. The lowercase has a relatively large, compact x-height, therefore economical in use. It's simplicity of design, and absence of highly-contrasted thick and thin strokes is particularly favorable for legibility at small point sizes and works well in demanding printing techniques, such as low resolution laser printing.

*Milvus'* character is overall unobtrusive and pleasant to read in all sizes, but works best when set between seven and fourteen points. These qualities enable *Milvus'* use to extend to beyond its original intentions.

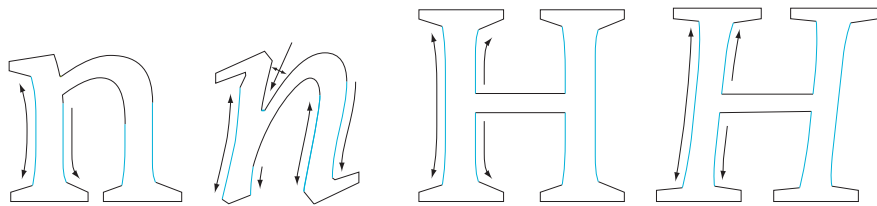
*Milvus* has an extended Latin character set, including a roman and an italic, with a bold variant that is still in progress.

*Milvus* was designed by Emma Williams and submitted in partial fulfilment of the requirements for the Master of Arts in Typeface Design, Department of Typography and Graphic Communication at the University of Reading, United Kingdom.

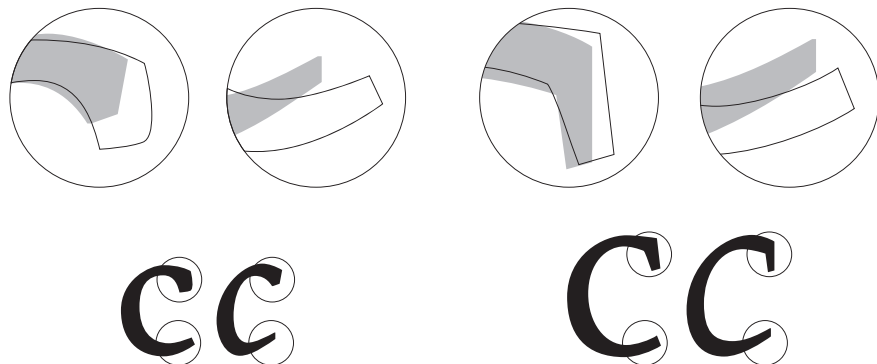
10/14 pt *Milvus* It was saved from national extinction by one of the world's longest running protection programmes, and has now been successfully re-introduced to England and Scotland.

10/14 pt Plantin It was saved from national extinction by one of the world's longest running protection programmes, and has now been successfully re-introduced to England and Scotland.

*Milvus and Plantin have the same x-height, making them easy typefaces to compare. By setting them each with identical proportions, it is possible to see that Milvus is the more efficient of the two.*



*The same structure has been applied to that italic compared to that of the upright: all stems swell at the top at bottom. The main difference in the italic is the introduction of angles, sharper/deeper joins/ink traps and larger entry/exit strokes.*



Accipitridae

*Milvus*

Accipitridae

*Plantin*

*Milvus* can find its principle roots in classic old style typefaces such as *Dante* and *Plantin*, A specific preference of *Plantin* is its heavy colour, resulting in a sense of weight and sturdiness on the page: a quality that has been applied to *Milvus*. When comparing *Milvus* to *Plantin*: the formality is achieved and a similarity to colour is apparent, the structure of *Milvus*' characters differ, and provide grace and elegance to the page.

Plumage is Streaked and Variegated

*y f z*

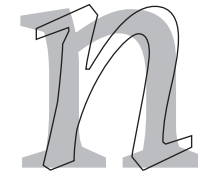
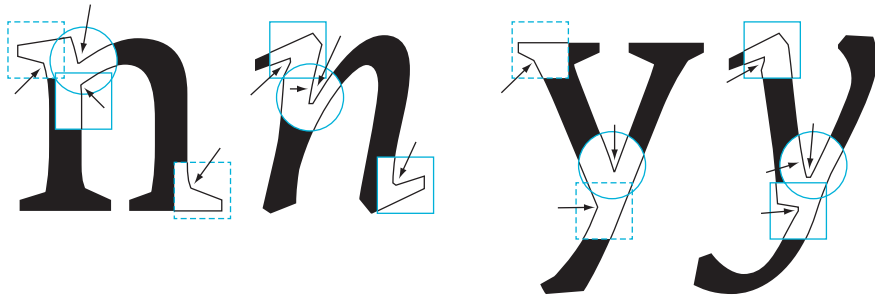
*bifnl*

*Milvus*' italic found it's own confident personality: a sense of energy, which applies more haste to the page. It can stand alone comfortably on the page and clearly differentiates words that are set amongst *Milvus*' roman. It is built upon the same structure as the upright, but is clearly distinct. The influence of handwriting and the tool is apparent, although not too calligraphic.

*Milvus*' italic is a true italic in the sense that when compared to the roman the angle differ between characters, for more fluent reading, it is slightly condensed, light in colour and has alternate letter shapes.



nhmbadkpruvwxy



*Milvus'* roman *serifs* are functional, somewhat blunt and short, asking for little attention. The italic *serifs* are just as functional but have become larger, reflecting the handwritten quality. An ink trap has been added to reduce their resulting colour: at small sizes this addition goes unnoticed, and when enlarged becomes an interesting visual element.

Due to the darker colour of *Milvus'* roman, it became necessary to open up connections, by inserting an ink trap at each acute connection. In the italic this application is investigated more, and the traps have become aesthetic details as well as functional.



A *bold* variant for *Milvus* was near completion during the MATD course: the outline to the left illustrates the bolde lowercase *n* in comparison to the regular weight.

**THE FAUNAL RESERVE OF THE LOBÉKÉ AREA OF SOUTH-EASTERN CAMEROON** is an important area for *foreft* conservation. One day, it is hoped, it will be part of an international unit, in association with two protected areas in neighbouring countries (Dzanga-Ndoki National Park, Central African Republic and Nouabalé-Ndoki National Park, Congo). With a view to assessing the status of its avifauna in particular, **24 DAYS WERE SPENT IN THREE SHORT SURVEYS FROM 1997 TO 1999**. The main forest type is semi-evergreen, with an open canopy; the only natural savannas are small saline swamps. The total of **305** species of bird recorded includes a forest nightjar *not yet identified* (but more likely to be the rare Itombwe Nightjar *Caprimulgus prigoginei* than a new SPECIES) and the Dja River Warbler *Bradypterus grandis*. The latter is a species confined to Rhynchospora swamps and had not been re-located in Cameroon since it was **first COLLECTED IN 1914 WEST** of the Dja river; the extent of suitable habitat in Lobéké makes this site the most important to date for its conservation.

Other rare or *little-known* forest species recorded include Olive Ibis *Bostrychia olivacea*, Sandy Scops Owl *Otus icterorhynchus*, Zenker's Honeyguide *Meligomon zenkeri*, Tessmann's Flycatcher *Muscicapa tessmanni* and Yellow-capped Weaver *Ploceus dorsomaculatus*. Barred Owlet *Glaucidium capense* is locally common in open-canopy forest: this population was only recently discovered **IN CENTRAL AFRICA** and its taxonomic relationships have yet to be determined<sup>3</sup>.

We include a brief comparison with the avifauna of adjacent Dzangha-Ndoki National Park and Nouabalé-Ndoki National Park. A feature of the Lobéké avifauna is the presence of a few species normally associated with forest at higher altitudes (**SUCH**

The following *OpenType* features are currently included with *Milvus*:

- Standard ligatures
- Historical ligatures
- Lowercase to small capitals and all small capitals
- Case-sensitive punctuation for capitals
- Case-sensitive punctuation for small capitals
- Figures; plus slashed zeros
- Fractions: numerators and denominators
- Superiors and inferiors
- Ordinals
- Localised forms
- Alternate glyphs for *Milvus italic*

The text to the left, highlights just a few of the *OpenType* features mention above.

Milvus *in use*

Giuseppe  
**Bogliane** *Professore | Professeur | Professor*

Dipartimento di Biologia Uccelli e powerlines  
Animale, Università di Pavia in Italia: una valutazione

Oiseaux et lignes électriques  
en Italie : une évaluation

Birds and powerlines in  
Italy: an assessment

CAMBRIDGE UNIVERSITY PRESS  
JUNE 2005

Birds of prey as limiting factors of gamebird  
populations in Europe: a review

80

WHETHER PREDATORS CAN LIMIT THEIR PREY HAS BEEN A TOPIC OF SCIENTIFIC DEBATE FOR DECADES. Traditionally it was believed that predators take only wounded, sick, old or otherwise low-quality individuals, and thus have *little impact* on prey populations. However, there is increasing evidence that, at least under certain circumstances, vertebrate predators may indeed limit prey numbers. This potential role of predators as limiting factors of prey populations has created conflicts between predators and human hunters, because the hunters may see predators as competitors for the same resources. A particularly acute conflict has emerged over the past few decades between gamebird hunters and birds of prey in Europe. ¶ AS A PART OF A EUROPEAN-WIDE RESEARCH PROJECT, we reviewed literature on the relationships

Jari Valkama <sup>a1,a2,c1</sup>, Erkki Korpinmäki <sup>a2</sup>, Beatriz Arroyo <sup>a3</sup>, Pedro Beja <sup>a4</sup>, Vincent Bretagnolle <sup>a5</sup>, Elisabeth Bro <sup>a6</sup>, Robert Kenward <sup>a7</sup>, Santi Mañosa <sup>a8</sup>, Stephen M. Redpath <sup>a9</sup>, Simon Thirgood <sup>a9</sup> and Javier Viñuela <sup>a10</sup>

<sup>a1</sup> Ringing Centre, Finnish Museum of Natural History, FIN-00014 University of Helsinki, Finland

<sup>a2</sup> Section of Ecology, Department of Biology, University of Turku, FIN-20014 Turku, Finland

<sup>a3</sup> Centre for Ecology and Hydrology, Banchory, Hill of Brathens, AB31 4BW, Scotland, UK

<sup>a4</sup> ERENA, Ordenamento e Gestão de Recursos Naturais, Av. Visconde Valmor, 11-3°, 1000-289 Lisboa, Portugal

<sup>a5</sup> Centre d'Etudes Biologiques de Chizé (CEBC-CNRS), BP14, 79360 Villiers En Bois, France

<sup>a6</sup> Office National de la Chasse et de la Faune Sauvage (ONCFS), Direction des Etudes et de la Recherche, 5, rue de Saint-Thibault, Boîte Postale 20, 78612 Le Perray en Yvelines cedex, France

<sup>a7</sup> Centre for Ecology and Hydrology, Winfrith Technology Centre, Dorchester, Dorset, DT2 8ZD, UK

<sup>a8</sup> Departament de Biologia Animal, Universitat de Barcelona, Facultat de Biologia, Avinguda Diagonal 645, 08028-Barcelona, Spain

<sup>a9</sup> Frankfurt Zoological Society, Africa Regional Office, PO Box 14935, Arusha, Tanzania

<sup>a10</sup> Instituto de Investigación en Recursos Cinegéticos (IREC), Ronda de Toledo s/n, 13005-Ciudad Real, Spain

FLORIZEL and PERDITA

A

Dramatic Pastoral,

In THREE ACTS.

Alter'd from

The WINTER'S TALE

OF

SHAKESPEARE

By DAVID GARRICK

Performed at the

Theatre Royal in Drury-Lane.

\* \* \* \* \*

LONDON:

Printed for J. and R. Tonson, in the Strand.

MDCCLVIII

*Are Summer songs for me and my Aunts* 13  
*While we lye tumbling in the hay.*  
I haue feru'd Prince *Florizell*, and in my time wore three 15  
pile, but now I am out of service.

*But shall I go mourne for that (my deere)*  
*the pale Moone shines by night:*  
*And when I wonder here, and there*  
*I then do moft go right.* 20  
*If Tinkers may have leave to live,*  
*and beare the Sow-skin Bowget,*  
*Then my account I well may give,*  
*and in the Stockes auouch-it.*

My Trafficke is sheets: when the Kite builds, looke to 25  
leffer Linnen. My Father nam'd me *Autolicus*, who be- 26  
ing (as I am) lytter'd under *Mercurie*, was likewise a  
snapper-up of unconfidered trifles: With Dye and drab, 28

13. Summer] Summers F4. 22. Sow-skin] Show-skin F4.  
20. moft go] *go most* Pope+, Var. Bowget] *Budget* Rowe.  
Rann, Mal. 24. auouch-it] *avouch it* Ff et seq.

13. Aunts] Dependant on the connection, this may mean a woman of a character rather more free than a mere hoydon.  
15, 16. three pile] NARKS: The finest and most costly kind of velvet; worn, therefore, only by persons of wealth and consequence. It alludes to something in the construction of the velvet. It seems to have been thought that there was a three-fold accumulation of the outer surface, or pile. Hence Shakespeare gives the name of 'Three-pile' to a mercer in *Meas. for Meas.* IV, iii, II.  
17-24. But, etc.] DRIGHTON: But that is no reason why I should be downcast; by the light of the moon I am anle to carry on my pretty thefts, and when I seem to be going wrong, to have lost my way, I am then going in what is the right path for me, *i.e.* I am most successful in my thieving. If tinkers are allowed to live and wander about the country carrying with them their leathern sack for tools and freely plying their trade, then there is no reason why I should not give an account of my occupation, or openly avow

# Hawks, Vultures and Eagles



**IDENTIFICATION** Even in silhouette this Kite is unmistakable, with long, relatively pointed wings angled to create an “M” shape and a long deeply forked tail with pointed corners. At closer range you can enjoy the rich red of its underparts and especially the almost orange colour of its uppertail, tipped with black corners.

**HABITAT** Breeds in steep-sided valleys with mature woodland. Winters on uplands in open country.

**DISTRIBUTION** Native breeding birds are found only in central Wales where they are now abundant and easily seen. To get particularly good views you should visit one of the winterfeeding sites at either Gigrin Farm near or by the road just south of Tregaron village. Birds gather here, especially in the evenings, to scavenge on meat scraps which are artificially provided. Introduced Scandinavian birds, identifiable by their wing tags, can also be seen in parts of Scotland and England such as in the Chilterns.

**POPULATION** In 1994, 111 territorial pairs were located in Wales and 70 of these were proven to have bred. In addition, 28 pairs of re-introduced birds raised 50 young in England and Scotland. By 1997 the total was thought to have risen to 160 pairs. The total European breeding population is between 18,000-28,000 pairs. In Germany the population is between 9000-19000. Russian population 1-50

## Diced Game Bird Pie with Whisky

- 1 · Preheat the oven to 350°F/180°C/Gas 4.
- 2 · Grease a 1 litre pie dish with butter.
- 3 · Mix well the ingredients up to and including cranberries and place into the pie dish. Sprinkle with parsley.
- 4 · Pat dry the diced game birds with kitchen paper. Season with salt and pepper. Place the game bird mix equally on top of the meat mixture in the pie dish.
- 5 · Brush the pie dish rim with egg yolk.
- 6 · Roll out the pastry to 5 mm thick to fit the pie dish and place on top.
- 7 · Press the pastry onto the rim carefully. Brush the pastry with the left over egg yolk.
- 8 · Bake in the middle of oven for 35-40 minutes.
- 9 · Serve immediately.

serves 4

20g Butter  
250g Pork Mince  
4 tbsp Whisky  
2 tbsp Sour cream  
80g Cheddar (grated)  
80g Dried cranberries  
1 Bunch parsley (chopped)  
1 Pack Diced Game Birds (approx. 400g)  
Salt & pepper  
500g Puff pastry  
1 Egg yolk

domestic fowl *Gallus gallus* var. domesticus and a highly active predator bird, the black kite (*Milvus migrans*) and a nocturnal bird (the spotted-eagle owl *Bubo bubo africanus*). The volume of the owl's eye was 4.8 and 2.2 times larger than that of the fowl and the kite, respectively. However, the pecten of the fowl consisted of more pleats (16–18) compared to the kite (12–13) and the owl (5–6).

The volume of the pecten of the kite was 1.4 and 2.7 times larger than that of the fowl and the owl, respectively ( $P < 0.05$ ). Similarly, the surface area of the pecten of the kite was 2.6 and 4 times larger than that of the fowl and owl, respectively ( $P < 0.05$ ).

The volume density of blood vessels (lumen and wall) in the pecten of the kite, fowl and owl comprised 67.7%, 66.9% and 62.6%, respectively, the pigmented tissue constituting the rest. Both the volume density and the volume of the blood in the pecten were higher in the diurnal birds (kite, fowl) than the owl ( $P < 0.05$ ). The surface area of the capillary luminal surface was 1.7 and 5.3 times higher in the kite than in the fowl and the owl, respectively ( $P < 0.05$ ). These results suggest that the functional morphology of the pecten correlates with the life-style of the bird and with functional need, and lends further support to the nutritive role of the pecten.

are being converted to mature woodland, while land abandonment is causing woodland expansion and erosion of open habitats. Based on habitat-selection analyses, we predicted the impact of such changes on common buzzards (*Buteo buteo*), which depend on forested and open areas for nesting and foraging. Compared to availability, at a micro-scale buzzards selected nests higher above ground and on trees frequently covered by ivy.

At the landscape-scale, buzzards avoided roads and conspecifics, while selecting rugged areas with high habitat heterogeneity, probably related to a varied food supply. Productivity was related to the availability of arid habitats, probably because of their richness in main prey species. Finally, population density was negatively related to the abundance of eagle owls (*Bubo bubo*), a potential predator of adults and nestlings, and positively related to the availability of woodland, a low predation-risk habitat rich in food and nest-sites. Therefore, buzzard settlement, density and productivity depended on the complex interplay of food availability, human persecution and predation risk. Thus, the current landscape changes would benefit buzzards by providing more nest-sites, but would be detrimental because of the lower productivity associated with the disappearance of dry open areas. Proposed conservation guidelines focus on conversion of coppice woodland to mature forests and active management of dry heath, a conservation sensitive habitat, through controlled burning.

\* Fabrizio Sergio <sup>a1a2c1</sup>, Chiara Scandolaro <sup>a2</sup>, Luigi Marchesi <sup>a2</sup>, Paolo Pedrini <sup>a2</sup> and Vincenzo Penteriani <sup>a3</sup>.

<sup>a1</sup> Edward Grey Institute of Field Ornithology, Department of Zoology, South Parks Road, Oxford, UK.

<sup>a2</sup> Raptor Conservation Research Unit, Trento Natural History Museum, via Calepina 14, 38100 Trento, Italy

<sup>a3</sup> Department of Applied Biology, Estación Biológica de Doñana, C.S.I.C., Avda. de María Luisa s/n., Pabellón del Perú, Apdo 1056, 41013 Seville, Spain

## Soaring behaviour in the Samoan flying fox (*Pteropus samoensis*)\*

SUSAN THOMSON

*It may reduce the energy costs of transport because gliding flight is much cheaper than active flapping flight.*

Bats seldom soar because it is behaviour generally associated with the use of thermals, which are normally of insufficient strength at night to support the behaviour. Daylight flying bats, however, such as the Samoan flying fox *Pteropus samoensis* may be able to exploit thermals for soaring. This may give the bats one of two advantages. It may reduce the energy costs of transport because gliding flight is much cheaper than active flapping flight. However, because less endogenous heat is generated by soaring, a second advantage may be that it reduces the thermal stress placed on these bats. Thermal stress is a factor that we have shown previously probably constrains the daylight flying behaviour of this species.

Observations of the patterns of soaring behaviour at two sites on American Samoa in March and October 1995 supported the predictions of the energy saving but not the hyperthermia avoidance hypothesis. Soaring was a common behaviour under all conditions and was used extensively when conditions did not pose a threat of hyperthermia. In March, the bats also adopted flight patterns over time that exposed

\* My thanks to Susan C. Thomson <sup>a1</sup> and Anne P. Brooke <sup>a2</sup>, who occasioned this paper, and to John R. Speakman <sup>a1</sup>, for their insightful commentary. <sup>a1</sup> Department of Zoology, University of Aberdeen, Aberdeen, Scotland AB24 2TZ, U.K. <sup>a2</sup> Department of Marine and Wildlife Resources, Pago Pago, American Samoa, U.S.A.

JOURNAL OF HELMINTHOLOGY  
SPECIFIC STATUS AND PATHOGENICITY OF SYNGAMID  
NEMATODES IN BIRD SPECIES FROM GERMANY

A total of 549 birds from four orders were examined for nematodes in their respiratory system from 1995 to 2000. Twelve individuals of Falconiformes (n = 503), one of Gruiformes (n = 22) and one of Ciconiformes (n = 1), but no bird of the order Strigiformes (n = 23) were infected with syngamids. The syngamid species included *Hovorkonema variegatum*, *Syngamus trachea* and *Cyathostoma trifurcatum* from the trachea, bronchi and air sacs, with *H. variegatum* being the most prevalent. *Cyathostoma trifurcatum* from a black stork *Ciconia nigra* is a new record for Germany. The marsh harrier *Circus aeruginosus* and the white-tailed sea eagle *Haliaeetus albicilla* are new hosts for *H. variegatum*. Morphological characters such as the dorsal rays of the bursa copulatrix, length of the spicules and the mouth capsule are used to differentiate species of the family Syngamidae.

JENI GARDNER, AVRIL MCELROY, DENHOLM LOWRY, BLONDIE PERSHING, BROOKE FISCINA, KISHA RAHL, EVERARD HENRY, CECIL ALTMANN, ALGER MUELLER, DENIECE SHICK, KAMERON RHINEHART, ARLIE CHAPPEL, BERNADINE JAMES, AUSTYN COOK, LESLY LESLIE, LAVINA BICKERSON, MERLETTA HAWKER, ALBERTINA CRIBBS.

*He that would have the wicked reign,  
Instead of help will find his bane.  
The Doves had oft escaped the Kite,  
By their celerity of flight;  
The ruffian then to coz'nage stoop'd,  
And thus the tim'rous race he duped:  
"Why do you lead a life of fear,  
Rather than my proposals hear ?  
Elect me for your king, and I  
Will all your race indemnify."  
They foolishly the Kite believed,  
Who having now the pow'r received,  
Began upon the Doves to prey,  
And exercise tyrannic sway.  
"Justly," says one who yet remain'd,  
" We die the death ourselves ordained."*

*He that would have the wicked reign,  
Instead of help will find his bane.  
The Doves had oft escaped the Kite,  
By their celerity of flight;  
The ruffian then to coz'nage stoop'd,  
And thus the tim'rous race he duped:  
"Why do you lead a life of fear,  
Rather than my proposals hear ?  
Elect me for your king, and I  
Will all your race indemnify."  
They foolishly the Kite believed,  
Who having now the pow'r received,  
Began upon the Doves to prey,  
And exercise tyrannic sway.  
"Justly," says one who yet remain'd,  
" We die the death ourselves ordained."*

1783 untersuchten wir den Rückgang und den gegenwärtigen Status des schwarzen Drachens *Milvus M. migrans* Boddaert und 1914 den des unterscheidenden endemischen, roten Drachens (Verde-Drachen oder Verde-roter Drachen) *Milvus milvus fasciicauda* Hartert auf den Verde-Archipel. 1996 und 1997 deckte die erste Zählung dem gesamten Archipel (Hille 1998), beider Drachen auf, dass weniger als 10 dieser Art noch existierten, und daß das Aussterben aller Drachen auf Kap-Verde unmittelbar bevorstand.

|                 |                      |
|-----------------|----------------------|
| Croatian        | Crveni zmaj          |
| Czech           | Luňák červený        |
| Danish          | Rød Glente           |
| Dutch           | Rode Wouw            |
| English         | Red kite             |
| Esperanto       | Ruĝa milvo           |
| Estonian        | Puna-harksaba        |
| Finnish         | Isohaarahaukka       |
| French          | Milan royal          |
| German          | Rotmilan             |
| Hungarian       | Vörös Kánya          |
| Icelandic       | Svölugleða           |
| Italian         | Nibbio reale         |
| Latin           | <i>Milvus milvus</i> |
| Lithuanian      | Rudasis peslys       |
| Norwegian       | Glente               |
| Portuguese      | Milhafre-real        |
| Polish          | Kania ruda           |
| Provençal       | Milan roge           |
| Romanian        | Roşu kite            |
| Scottish Gaelic | Gled                 |
| Slovak          | Haja červená         |
| Slovenian       | Rjavi škarnik        |
| Spanish         | Milano real          |
| Swedish         | Röd glada            |
| Turkish         | Kızıl çaylak         |
| Welsh           | Barcud               |

#### 2002 Avian egg size: variation within species and inflexibility within individuals

Julian K. Christians, Department of Biological Sciences, University, Burnaby, British Columbia, V5A 1S6, Canada

| town               | county   | date     | date   |
|--------------------|----------|----------|--------|
| Fakenham           | Norfolk  | 10/07/08 | 17:31  |
| Kelling            | Norfolk  | 09/07/08 | 18:15  |
| High Bentham       | N Yorks  | 09/07/08 | 17:13  |
| Fakenham           | Norfolk  | 09/07/08 | 14:08  |
| Mileham            | Norfolk  | 08/07/08 | 20:40  |
| Devoran            | Cornwall | 04/07/08 | 16:117 |
| Allestree          | Derbys   | 03/07/08 | 18:24  |
| Desford            | Leics    | 03/07/08 | 18:21  |
| Crich              | Derbys   | 03/07/08 | 09:55  |
| Frampton Cotterell | Glos     | 29/06/08 | 11:50  |

Egg size is a widely-studied trait and yet the causes and consequences of variation in this trait remain poorly understood. Egg size varies greatly within many avian species, with the largest egg in a population generally being at least 50% bigger, and sometimes twice as large, as the smallest. Generally, approximately 70% of the variation in egg mass is due to variation between rather than within clutches, although there are some cases of extreme intra-clutch egg-size variation. Despite the large amount of variation in egg size between females, this trait is highly consistent within individuals between breeding attempts; the repeatability of egg size is generally above 0.6 and tends to be higher than that of clutch size or laying date.

Heritability estimates also tend to be much higher for egg size (> 0.5) than for clutch size or laying date (< 0.5). As expected, given the high repeatability and heritability of egg size, supplemental food had no statistically significant effect on this trait in 18 out of 28 (64%) studies. Where dietary supplements do increase egg size, the effect is never more than 13% of the control values and is generally much less. Similarly, ambient temperature during egg formation generally explains less than 15% of the variation in egg size. In short, egg size appears to be a characteristic of individual females, and yet the traits of a female that determine egg size are not clear. Although egg size often increases with female age (17 out of 37 studies), the



*Sources cited*

- 03 <http://www.birdguides.com/species/species.asp?sp=30030>
- 10 Bird Conservation International, Volume 10, Issue 01, Mar 2000, pp 67-87
- 14 Bird Conservation International, Volume 15, Issue 02, Jun 2005, pp 131-145
- 15 Biological Reviews, Volume 80, Issue 02, May 2005, pp 171-203
- 17 Shakespeare, William Winter's Tale Arden Shakespeare; Jun 2000
- 18 [lh6.ggpht.com/.../FTx2rZ1stos/MilanoReal.jpg](http://lh6.ggpht.com/.../FTx2rZ1stos/MilanoReal.jpg)
- 19 <http://www.birdguides.com/webzine/article.asp?a=1361>
- 20 <http://www.donaldrussell.com/recipe.cfm?id=215&pageid=15>
- 21 Journal of Zoology, Volume 254, Issue 04, Aug 2001, pp 521-528
- 22 Animal Conservation, Volume 8, Issue 01, Feb 2005, pp 17-25
- 23 Journal of Zoology, Volume 256, Issue 01, Jan 2002, pp 55-62
- 24 Journal of Helminthology, Volume 81, Issue 01, Mar 2007, pp 67-73
- 25 <http://www.mythfolklore.net/aesopica/phaedrus/131.htm>
- 27 Biological Reviews, Volume 77, Issue 01, Feb 2002, pp 1-26

July 2008

Emma Williams

*em.u.williams@gmail.com*